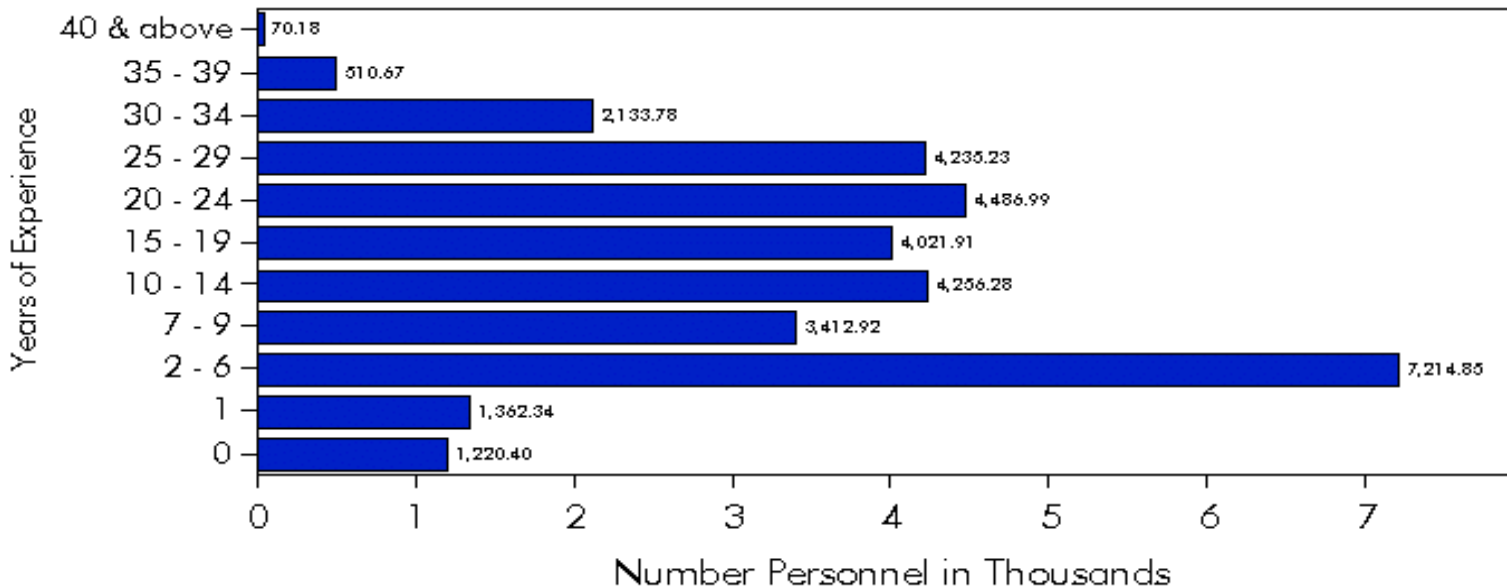


# Instructional Personnel by Years of Experience 2002-2003

<i>Years of Experience</i>	<b>Principals and Asst. Principals</b>	<b>Supervisors</b>	<b>Guidance and Psychologists</b>	<b>Librarians and Media Spec.</b>	<b>Classroom Teachers</b>	<b>Total</b>
<i>0</i>	10.00	1.66	25.42	6.08	1,177.24	1,220.40
<i>1</i>	9.98	1.37	37.65	17.15	1,296.18	1,362.34
<i>2 - 6</i>	114.44	36.11	164.73	82.76	6,816.81	7,214.85
<i>7 - 9</i>	128.09	31.23	108.50	60.14	3,084.96	3,412.92
<i>10 - 14</i>	225.50	66.15	165.67	83.14	3,715.82	4,256.28
<i>15 - 19</i>	212.11	67.04	137.03	113.37	3,492.36	4,021.91
<i>20 - 24</i>	239.29	115.66	156.06	130.37	3,845.60	4,486.99
<i>25 - 29</i>	286.36	126.42	168.04	154.67	3,499.74	4,235.23
<i>30 - 34</i>	170.09	84.49	94.83	86.50	1,697.87	2,133.78
<i>35 - 39</i>	60.83	12.84	27.15	19.10	390.75	510.67
<i>40 &amp; above</i>	8.00	1.57	3.44	3.88	53.30	70.18
<b>STATEWIDE TOTAL</b>	1,464.70	544.53	1,088.54	757.15	29,070.63	32,925.54
<b>AVERAGE EXPERIENCE</b>	20.55	29.73	17.75	19.96	14.40	14.92

## Instructional Personnel By Years of Experience



NOTE: ALL CALCULATIONS HAVE BEEN ROUNDED TO THE NEAREST HUNDREDTH  
THIS MAKES A DIFFERENCE IN TOTALS ON DIFFERENT REPORTS.