

2012 Mississippi State Accountability System Results - Final

Districts

Label	Number		Percentage	
	2012	2011	2012	2011
A - Star	3	4	2%	3%
B - High Performing	47	28	31%	19%
C - Successful	42	50	28%	33%
D - Academic Watch	37	43	24%	28%
F - Low Performing	17	25	11%	16%
F - At Risk of Failing	0	0	0%	0%
F - Failing	3	2	2%	1%
NA-Excellence For All Pilot	3	N/A	2%	
Total	152	152	100%	100%
C and Above	92	82	61%	54%

Schools

Label	Number		Percentage	
	2012	2011	2012	2011
A - Star	80	65	10%	8%
B - High Performing	213	181	26%	23%
C - Successful	216	231	27%	29%
D - Academic Watch	177	189	22%	23%
F - Low Performing	99	128	12%	16%
F - At Risk of Failing	0	1	0%	0%
F - Failing	8	11	1%	1%
NA-Excellence For All Pilot	13	N/A	2%	
Total	806	806	100%	100%
C and Above	509	477	63%	59%

Comparison of District Annual Growth Status

	2012		2011	
	Number	Percent	Number	Percent
Met Growth	104	70%	90	59%

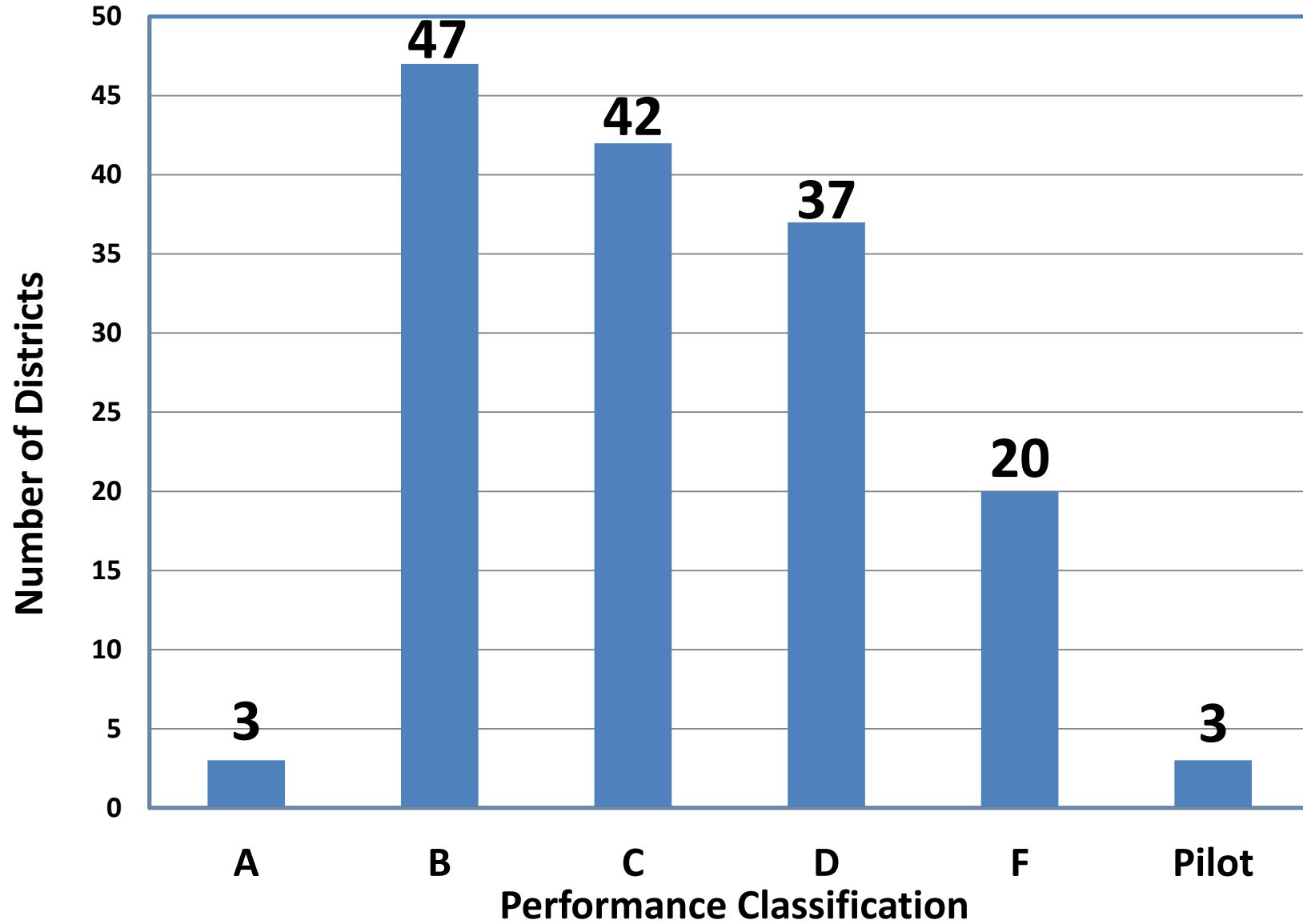
2012	Growth Not Met		Growth Met	
QDI	Number	Percent	Number	Percent
200-300	0	0%	3	2%
166-199	3	2%	47	32%
133-165	22	15%	39	26%
100-132	17	11%	15	10%
0-99	3	2%	0	0%
Totals	45	30%	104	70%

Comparison of School Annual Growth Status

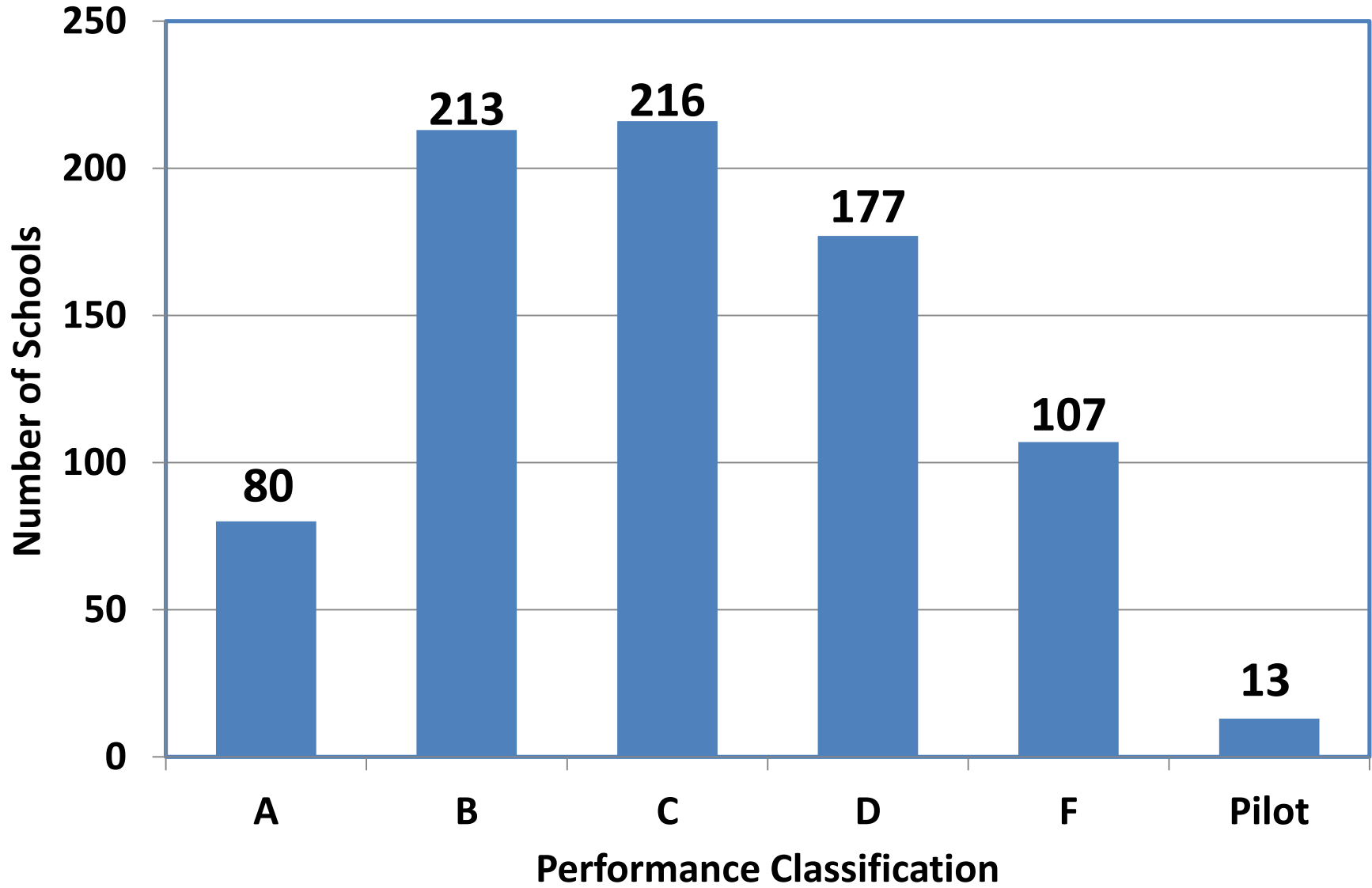
	2012		2011	
	Number	Percent	Number	Percent
Met Growth	502	63%	465	58%

2012	Growth Not Met		Growth Met	
QDI	Number	Percent	Number	Percent
200-300	6	1%	80	10%
166-199	47	6%	207	26%
133-165	131	17%	169	21%
100-132	99	12%	46	6%
0-99	8	1%	0	0%
Totals	291	37%	502	63%

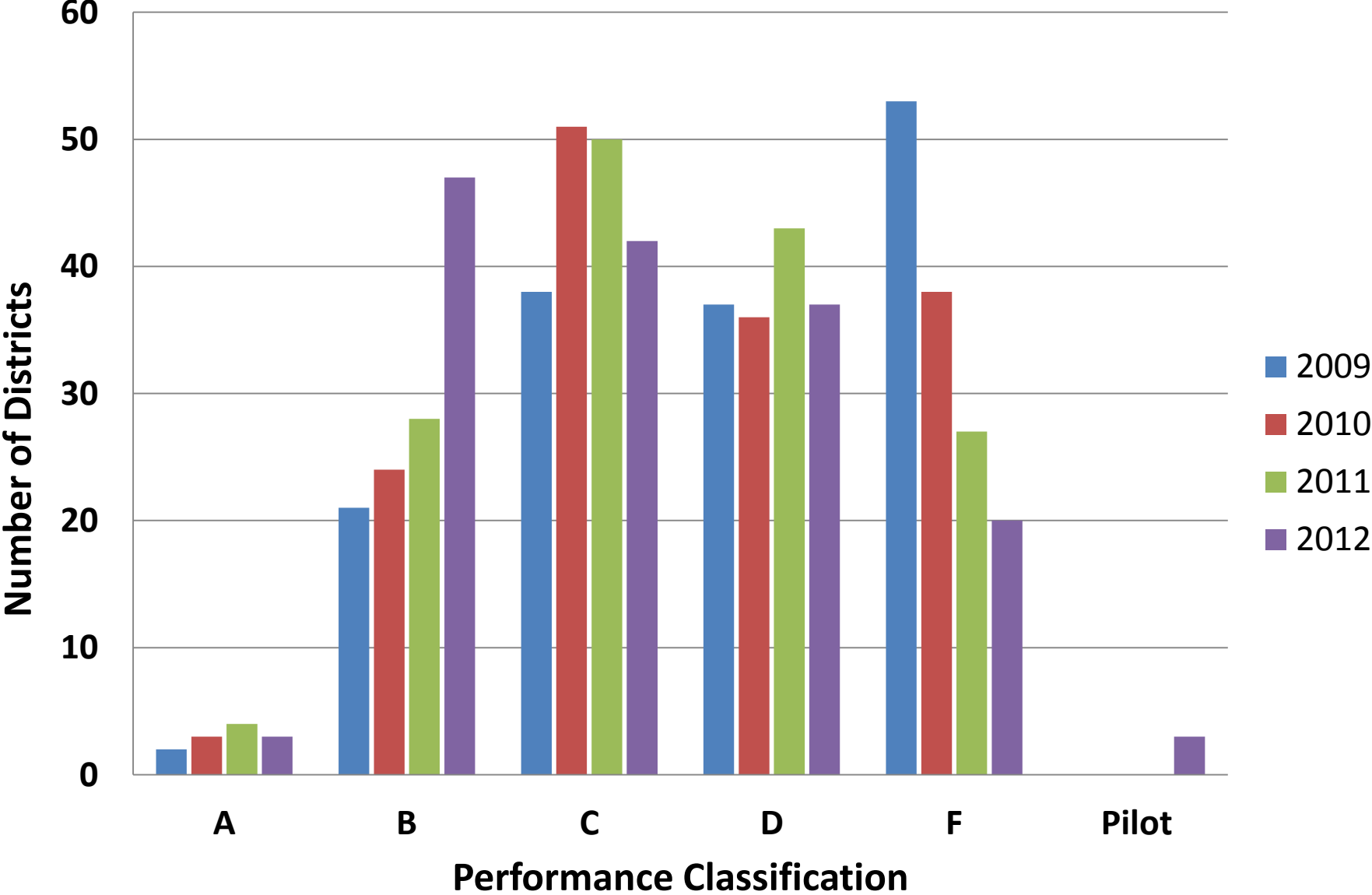
2012 District Performance Classifications



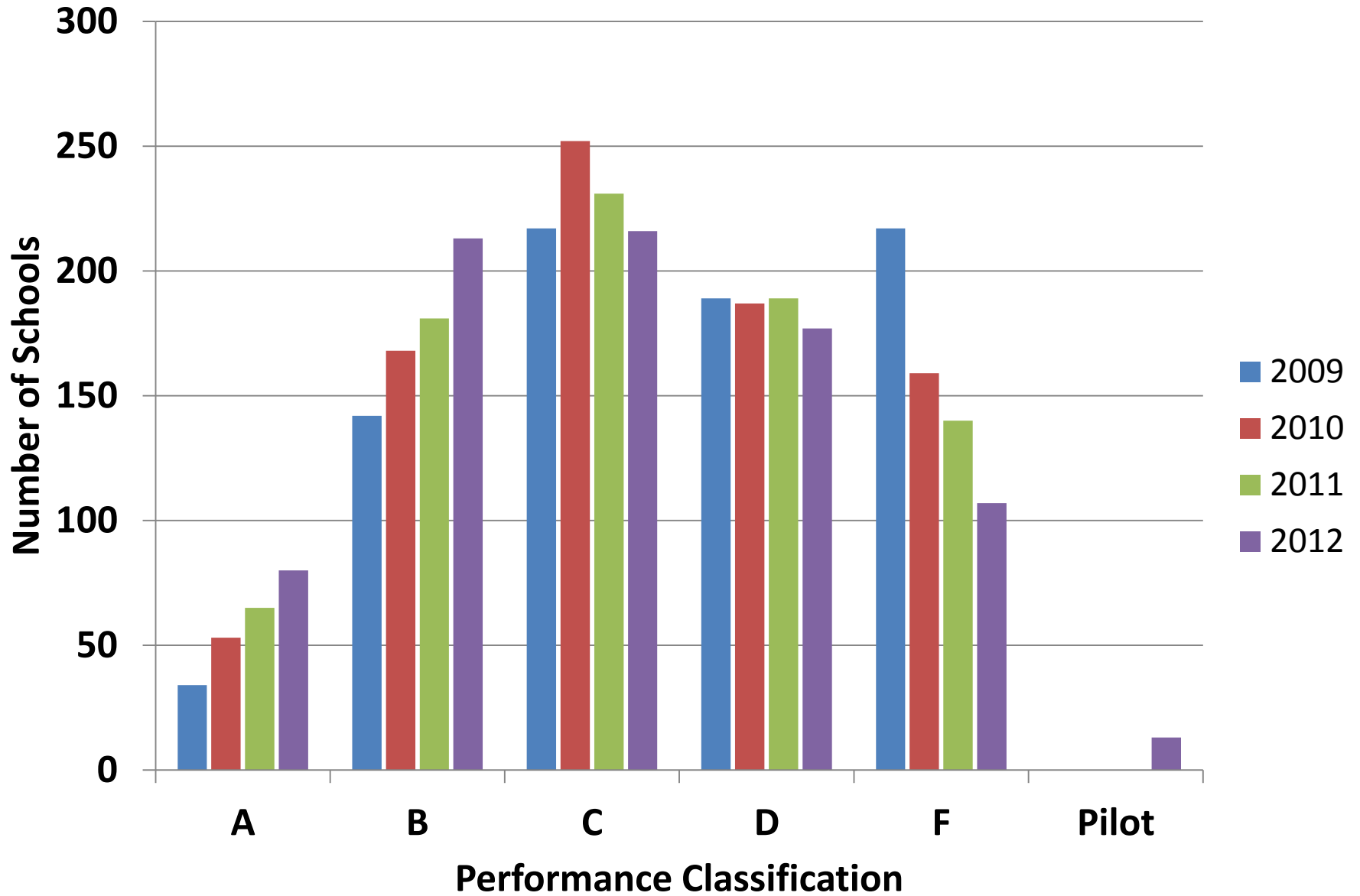
2012 School Performance Classifications



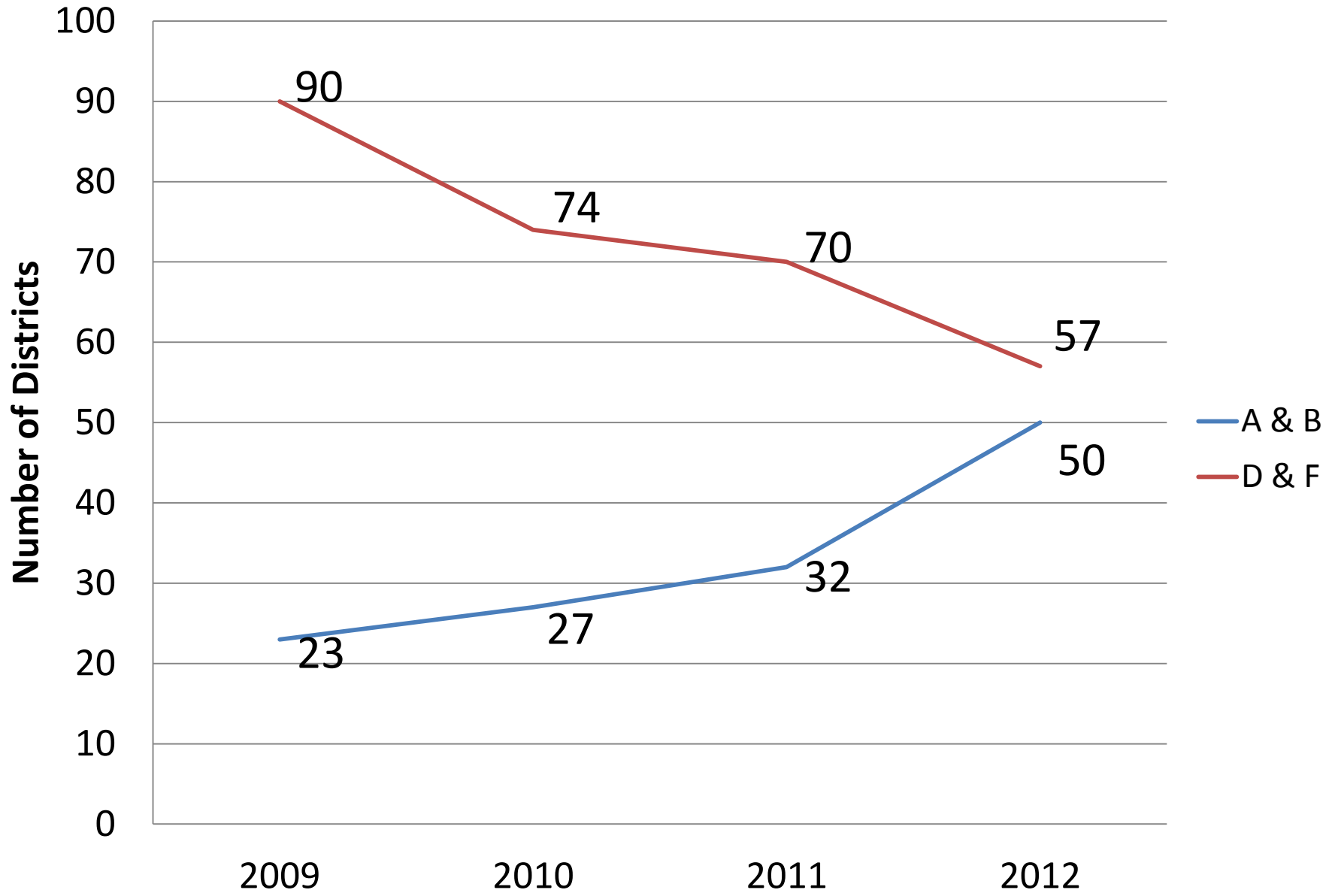
District Performance Classifications (2009 - 2012)



School Performance Classifications (2009 - 2012)



District Letter Grade Counts (2009 - 2012)



School Letter Grade Counts (2009 - 2012)

