

2013 Mississippi Statewide Accountability System Results – Final

Districts

Label	Number			Percentage		
	2013	2012	2011	2013	2012	2011
A	19	3	4	13%	2%	3%
B	43	47	28	28%	31%	19%
C	37	42	50	25%	28%	33%
D	37	37	43	25%	24%	28%
F	15	20	27	10%	13%	17%
Excellence for All Pilot	(3)	3	N/A	(2%)	2%	
Total	151	152	152	100%	100%	100%
C and Above	99	92	82	66%	61%	54%

*The 2013 calculations were used to assign the grade for Clarksdale’s district-level grade assignment (D).

**The district-level QDI for Corinth (A) was determined by using a weighted average of the 2013 QDI of the elementary and middle school with the 2011 QDI from the high school combined with the district’s 2013 graduation rate.

***The 2011 calculations were used to assign the grade for Gulfport’s district-level grade assignment (B).

Note: The Excellence for All Districts did not receive Accountability Labels for 2012.

Schools

Label	Number			Percentage		
	2013	2012	2011	2013	2012	2011
A	113	80	65	14%	10%	8%
B	222	213	181	28%	26%	23%
C	231	216	231	29%	27%	29%
D	144	177	189	18%	22%	23%
F	92	107	140	11%	11%	17%
Excellence for All Pilot	(13)	13	N/A	(2%)	2%	
Total	802	806	806	100%	100%	100%
C and Above	566	509	477	71%	63%	59%

*The 2013 calculations were used to assign the grades for all schools in the Clarksdale Municipal School District.

**The grade assigned to Corinth HS was determined by combining their 2011 QDI and growth calculations with their 2013 graduation rate.

***The 2011 calculations were used to assign the grades for all schools in the Gulfport School District.

Note: The Excellence for All Schools did not receive Accountability Labels for 2012.

The sum of the percentages may not equal to 100 due to rounding.

Comparison of District Annual Growth Status

	2013		2012		2011	
	Number	Percent	Number	Percent	Number	Percent
Met Growth	107	71%	104	70%	90	59%

2013	Growth Not Met		Growth Met	
QDI	Number	Percent	Number	Percent
200-300	0	0%	9	6%
166-199	0	0%	53	35%
133-165	28	19%	38	25%
100-132	15	10%	7	5%
0-99	1	1%	0	0%
Totals	44	30%	107	71%

Comparison of School Annual Growth Status

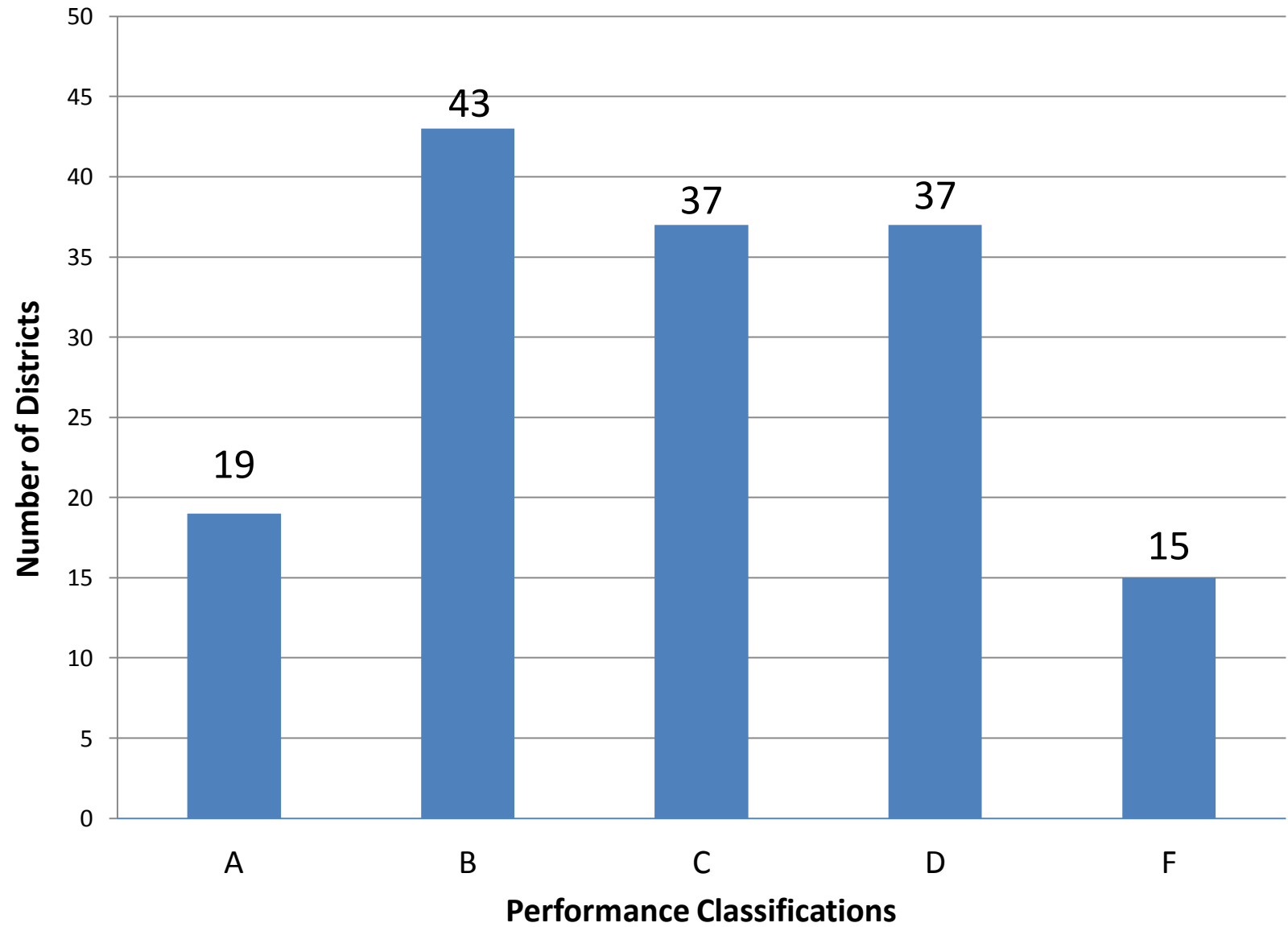
	2013		2012		2011	
	Number	Percent	Number	Percent	Number	Percent
Met Growth	515	67%	502	63%	465	58%

2013	Growth Not Met		Growth Met	
QDI	Number	Percent	Number	Percent
200-300	9	1%	106	13%
166-199	57	7%	214	27%
133-165	115	14%	176	22%
100-132	92	11%	29	4%
0-99	3	1%	1	1%
Totals	276	34%	526	67%

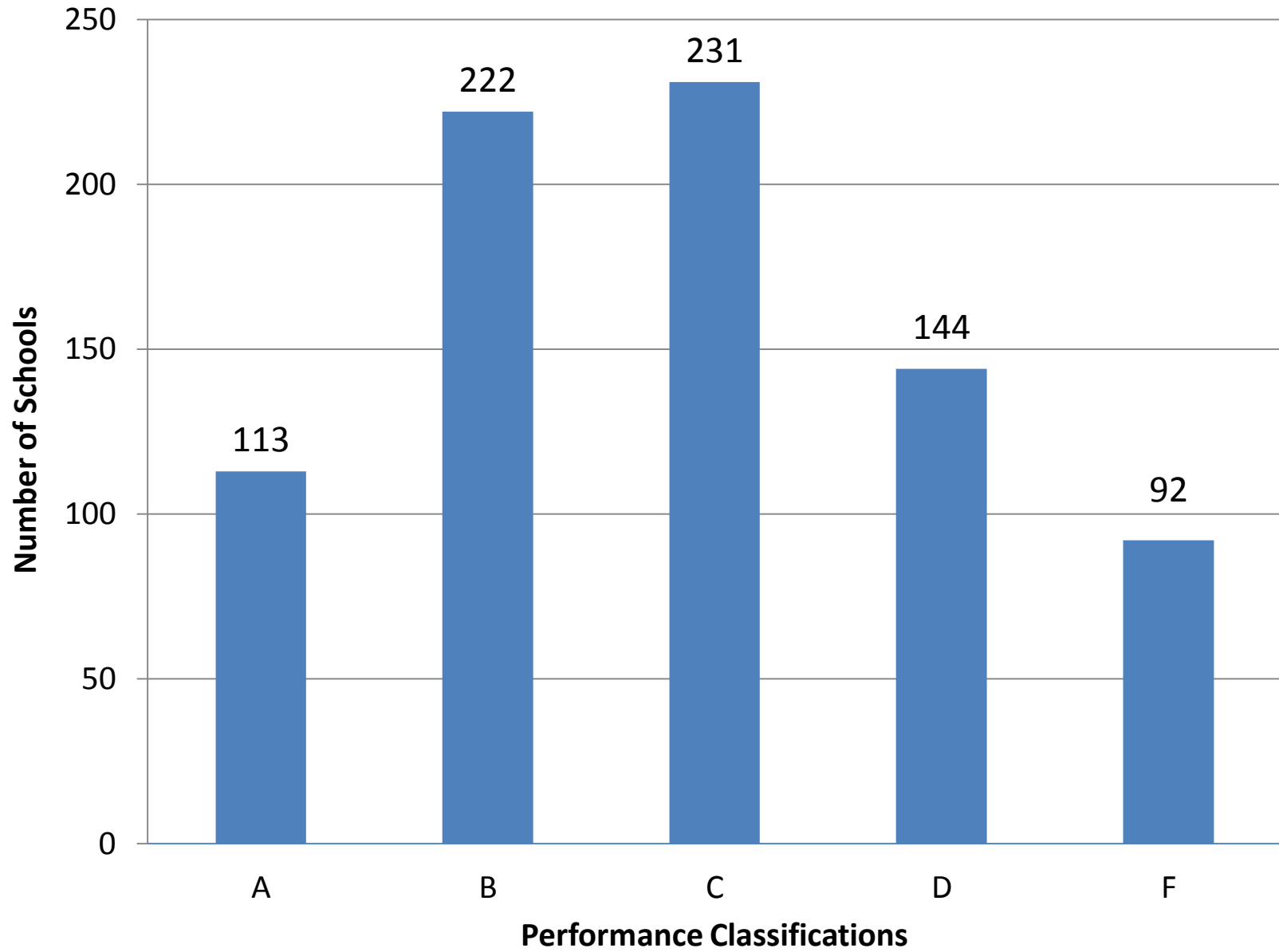
Note: The sum of the percentages may not equal to 100 due to rounding.

The Excellence for All Districts and Schools did not receive Accountability Labels for 2012.

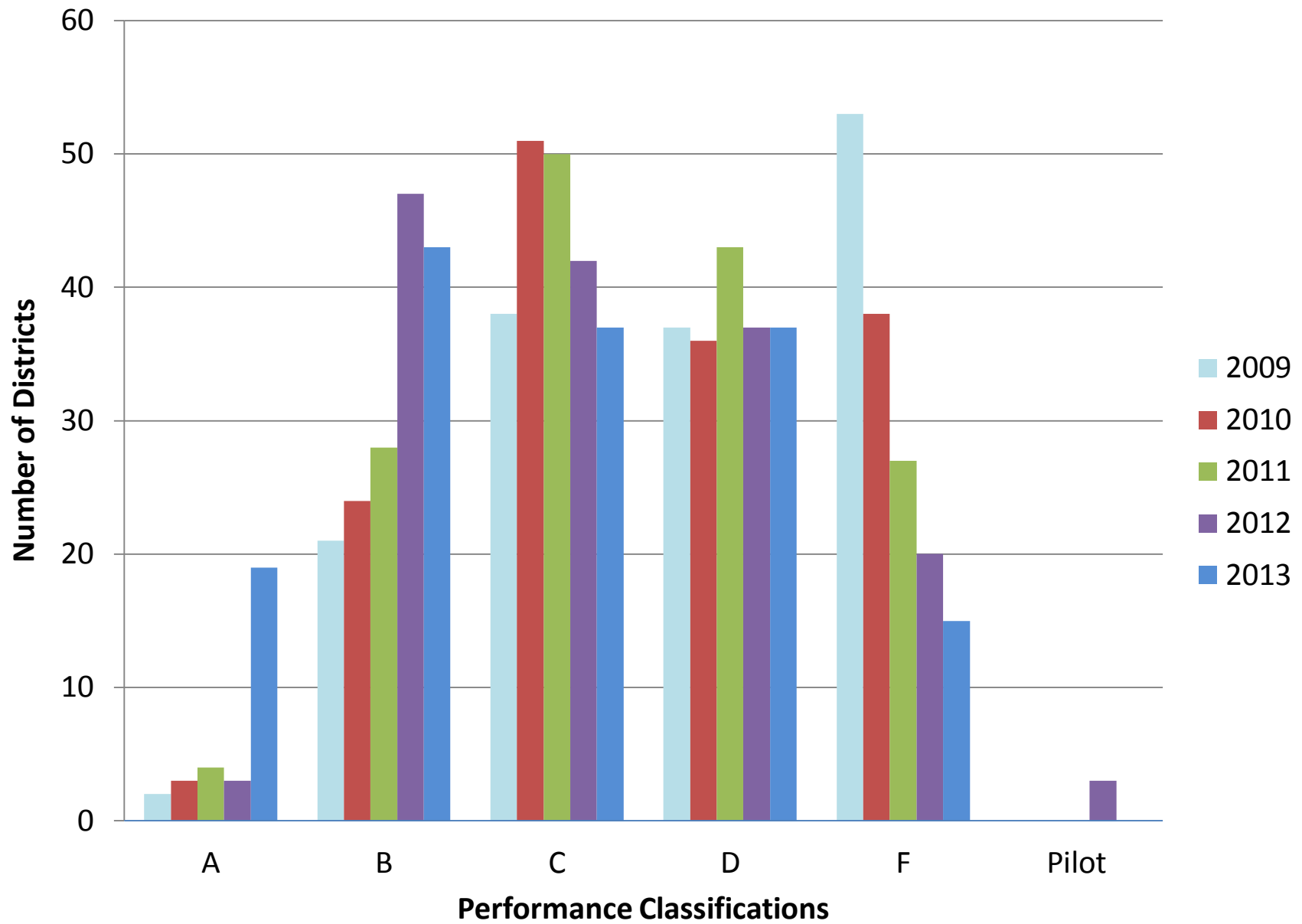
2013 District Performance Classifications



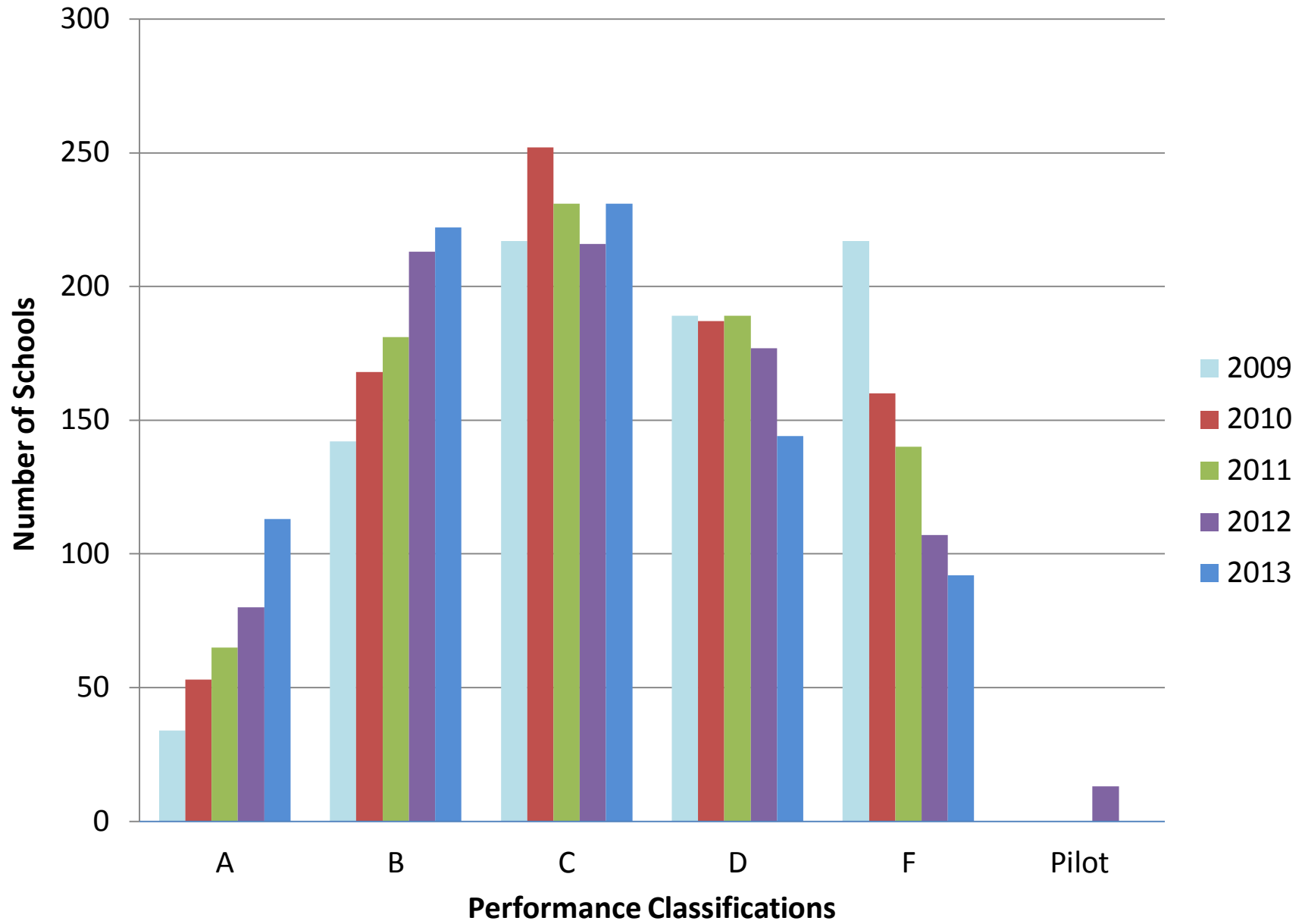
2013 School Performance Classifications



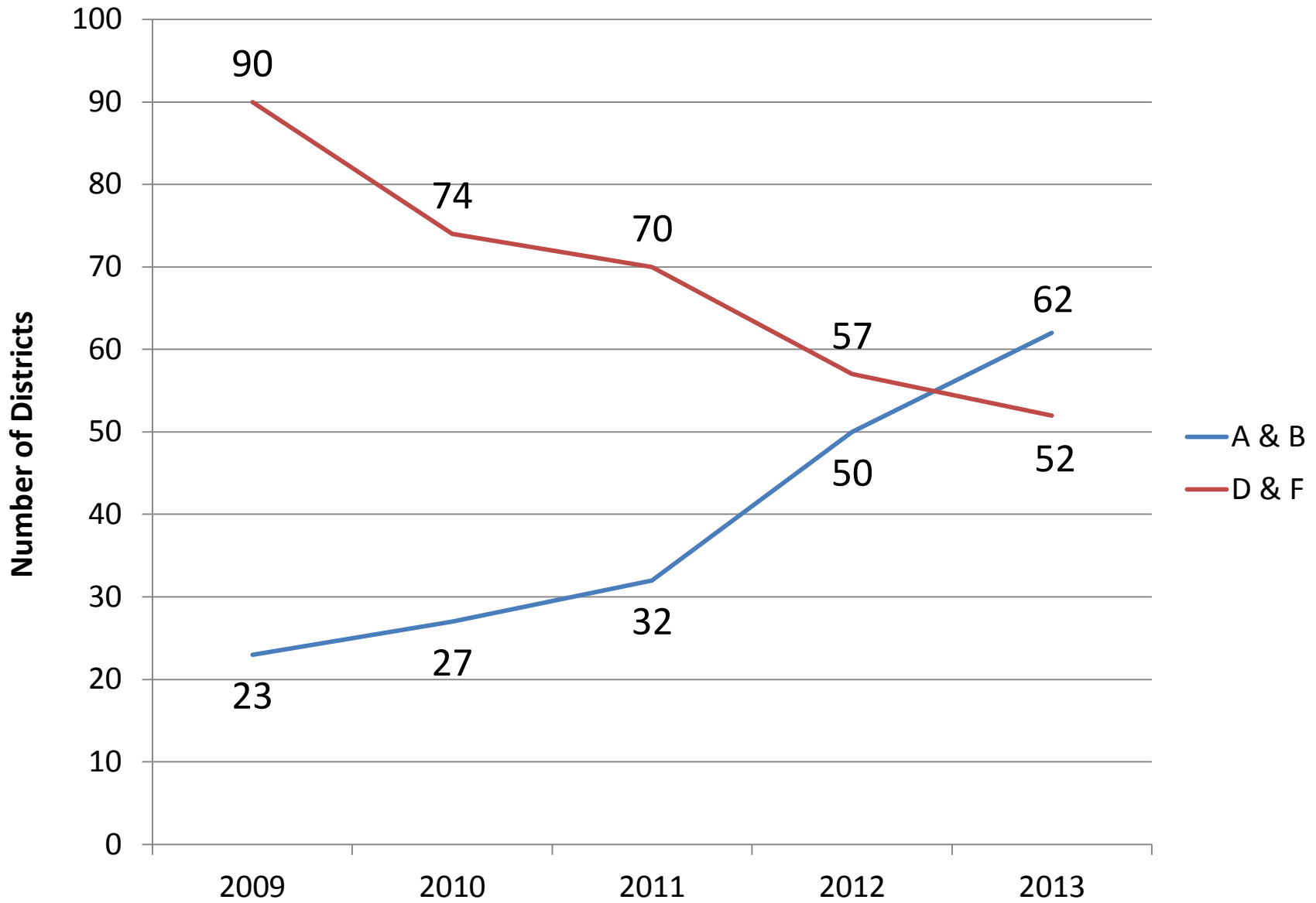
District Performance Classifications (2009 – 2013)



School Performance Classifications (2009 – 2013)

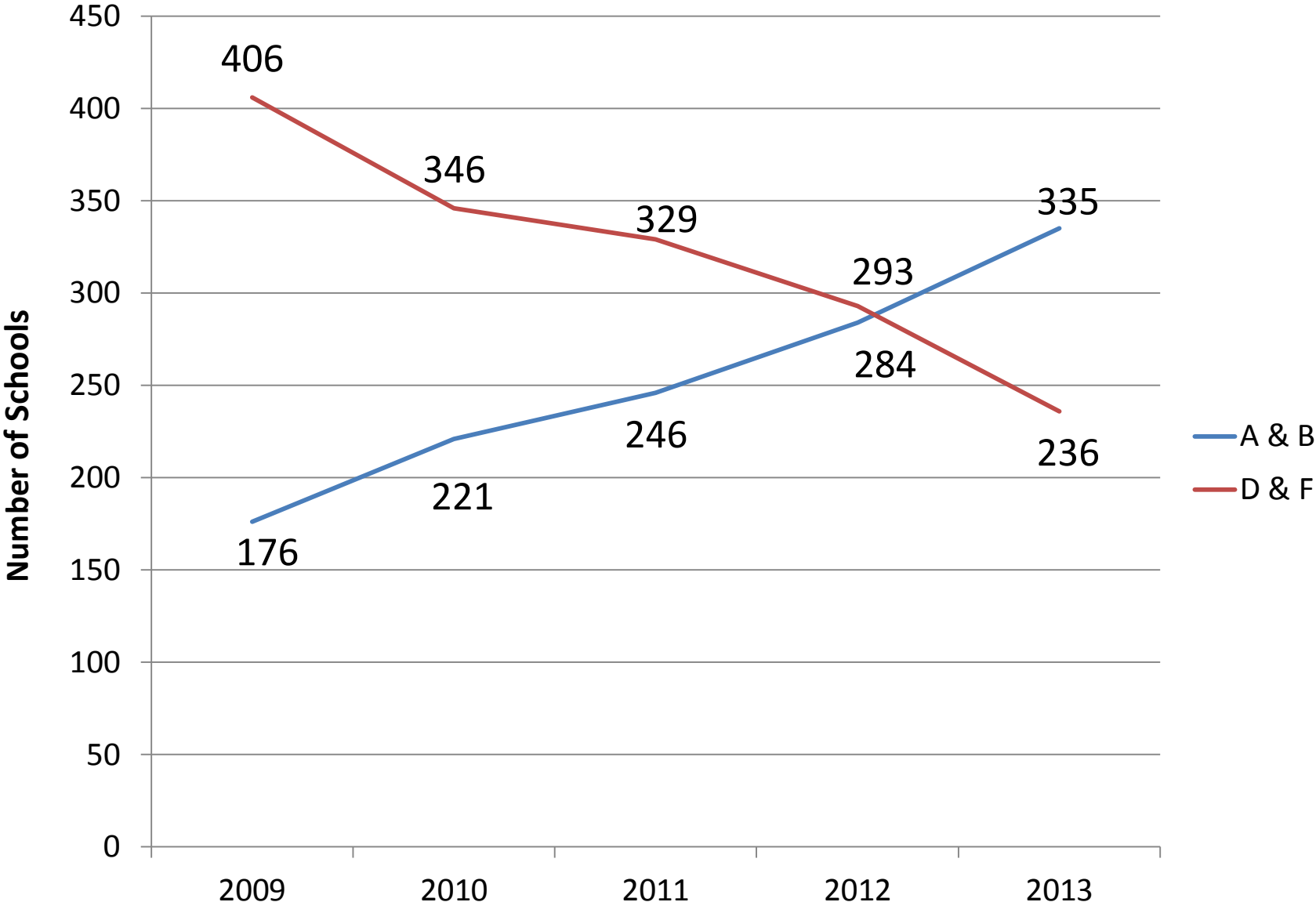


District Letter Grade Counts (2009 – 2013)



Excellence for All Districts are not included in the grade counts above for 2012.

School Letter Grade Counts (2009 – 2013)



Excellence for All Schools are not included in the grade counts above for 2012.

Changes in Grade-Levels 2012 vs. 2013

Districts						
	2013					
2012	A	B	C	D	F	Total
A	3	0	0	0	0	3
B	15	30	1	1	0	47
C	0	10	16	16	0	42
D	0	2	16	13	6	37
F	0	0	4	6	9	19
Total:	18	42	37	36	15	148

53 districts improved at least one grade-level.

24 districts dropped at least one grade-level.

71 districts had no change in grade-level.

Note: Excellence for All districts are excluded because no grade classifications were assigned to those districts in 2012.

Schools						
	2013					
2012	A	B	C	D	F	
A	68	7	3	0	0	78
B	37	136	30	5	0	208
C	3	55	105	38	13	214
D	1	14	70	62	24	171
F	0	1	19	34	50	104
	109	213	227	139	87	775

234 schools improved at least one grade-level.

120 schools dropped at least one grade-level.

421 schools had no change in grade-level.

Note: Schools with no grade classification for either 2012 or 2013 and East Kemper Attendance are excluded.